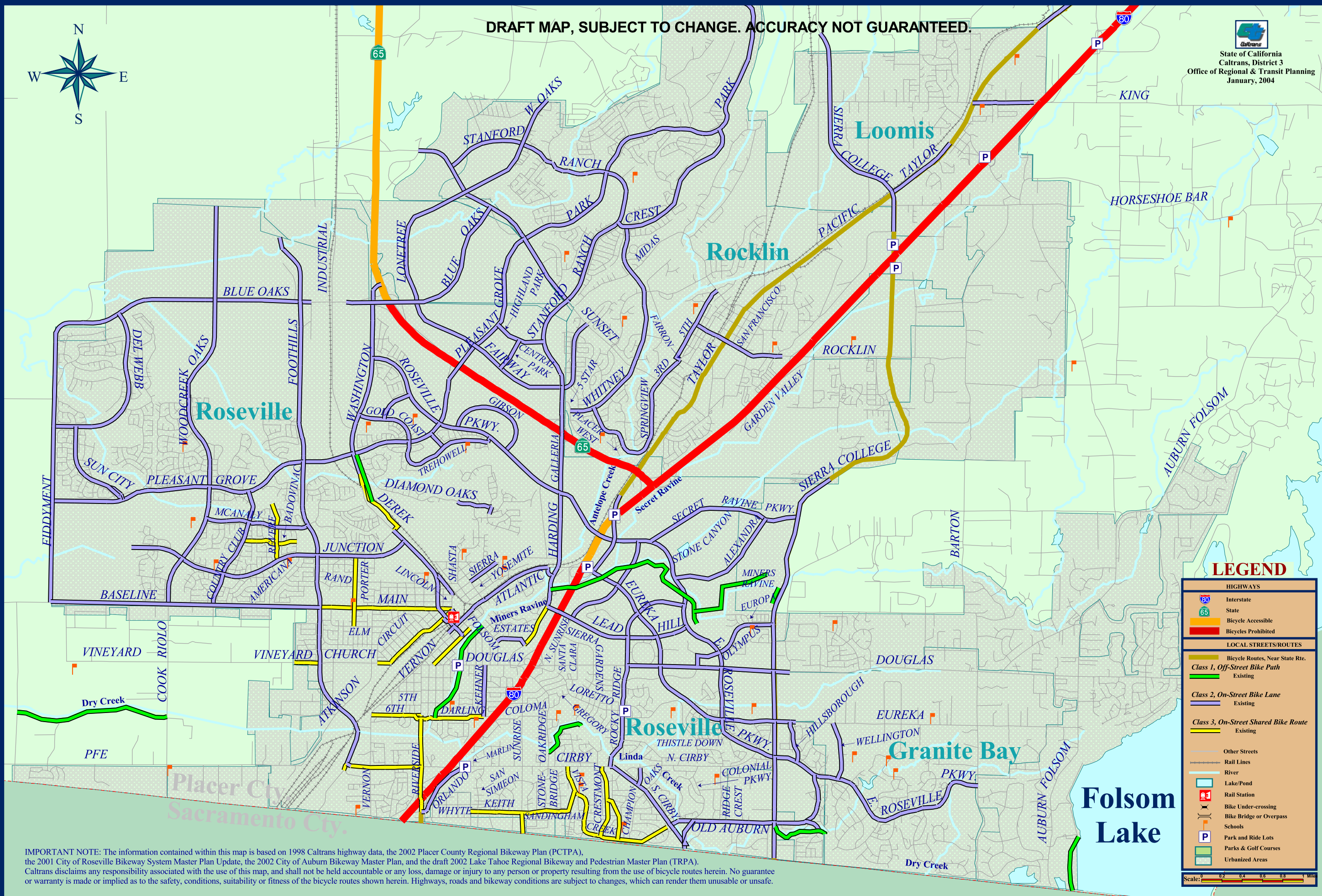
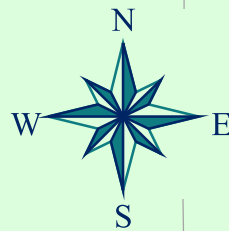


DRAFT MAP, SUBJECT TO CHANGE. ACCURACY NOT GUARANTEED.



State of California
Caltrans, District 3
Office of Regional & Transit Planning
January, 2004



LEGEND

HIGHWAYS	
	Interstate
	State
	Bicycle Accessible
	Bicycles Prohibited
LOCAL STREETS/ROUTES	
	Bicycle Routes, Near State Rte.
	Class 1, Off-Street Bike Path
	Existing
	Class 2, On-Street Bike Lane
	Existing
	Class 3, On-Street Shared Bike Route
	Existing
	Other Streets
	Rail Lines
	River
	Lake/Pond
	Rail Station
	Bike Under-crossing
	Bike Bridge or Overpass
	Schools
	Park and Ride Lots
	Parks & Golf Courses
	Urbanized Areas



IMPORTANT NOTE: The information contained within this map is based on 1998 Caltrans highway data, the 2002 Placer County Regional Bikeway Plan (PCTPA), the 2001 City of Roseville Bikeway System Master Plan Update, the 2002 City of Auburn Bikeway Master Plan, and the draft 2002 Lake Tahoe Regional Bikeway and Pedestrian Master Plan (TRPA). Caltrans disclaims any responsibility associated with the use of this map, and shall not be held accountable or any loss, damage or injury to any person or property resulting from the use of bicycle routes herein. No guarantee or warranty is made or implied as to the safety, conditions, suitability or fitness of the bicycle routes shown herein. Highways, roads and bikeway conditions are subject to changes, which can render them unusable or unsafe.

MAP 9C: BICYCLE ROUTES, ROSEVILLE/ROCKLIN