

DRAFT MAP, SUBJECT TO CHANGE. ACCURACY NOT GUARANTEED

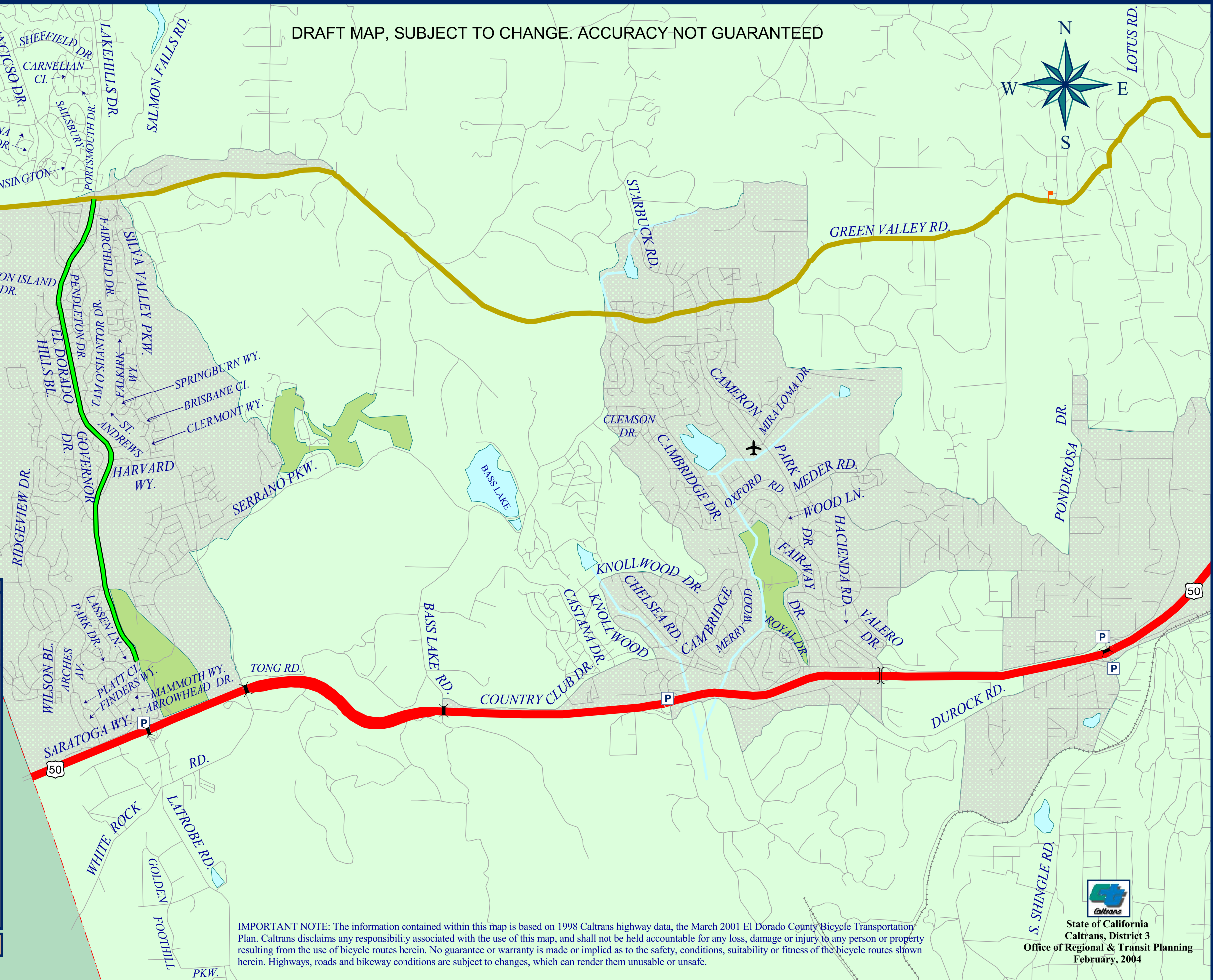


Folsom Lake
Sacramento County
El Dorado County

LEGEND

HIGHWAYS	
	Federal
	State
	Bicycle Accessible
	Bicycles Prohibited
LOCAL STREETS/ROUTES	
	Bicycle Routes, Near State Rte.
	Class 1, Off-Street Bike Path
	Existing
	Class 2, On-Street Bike Lane
	Existing
	Class 3, On-Street Shared Bike Route
	Existing
	Other Streets
	Rail Lines
	River
	Lake/Pond
	At-Grade Intersection
	Bike Under-crossing
	Bike Bridge or Overpass
	Park and Ride Lot
	Schools
	Airport
	Parks & Golf Courses
	Urbanized Areas

Scale: 0 0.25 0.5 0.75 Miles



IMPORTANT NOTE: The information contained within this map is based on 1998 Caltrans highway data, the March 2001 El Dorado County Bicycle Transportation Plan. Caltrans disclaims any responsibility associated with the use of this map, and shall not be held accountable for any loss, damage or injury to any person or property resulting from the use of bicycle routes herein. No guarantee or warranty is made or implied as to the safety, conditions, suitability or fitness of the bicycle routes shown herein. Highways, roads and bikeway conditions are subject to changes, which can render them unusable or unsafe.



State of California
Caltrans, District 3
Office of Regional & Transit Planning
February, 2004

MAP 10A: BICYCLE ROUTES EL DORADO HILLS & CAMERON PARK